




*Possibilities to Realities*  
[www.sfms.edu.sg](http://www.sfms.edu.sg)

**YOUR**   
**FUTURE**  
**AWAITS**  
**PROSPECTUS 2010 / 2011**



**ST. FRANCIS**  
**METHODIST SCHOOL**  
*Possibilities to Realities*  
*where no one is left behind*

# CONTENTS

The School	<b>2</b>
Visionary Leadership	<b>4</b>
Academic Courses	<b>10</b>
Our Services	<b>20</b>
Our Facilities	<b>22</b>
Application Pack	<b>29</b>



# THE SCHOOL




  
**ST. FRANCIS  
 METHODIST SCHOOL**

### The St. Francis Vision

Our Vision is to be a school of choice with a vibrant international learning community, rooted in God's word and inspiring lives to be the best that they can be.

Our Mission is to provide a nurturing environment where students are given opportunities to excel through different educational pathways, to equip them with the necessary skills to succeed in a rapidly changing world, and to be men and women of character and integrity.

### School Philosophy

1. We believe that our students are here to learn and will benefit from the academic rigour, the Pastoral Care Programme, the various physical and sports activities, and the enriching Visual and Performing Arts Programme that the school provides.
2. We recognise and respect the uniqueness of every student.
3. We welcome students from different countries to enrich our school community.
4. We believe in the spiritual growth of our staff and students based on Christian values and beliefs as we are a Methodist institution.
5. We value creativity, imagination, innovation and entrepreneurship in our students.

### School Values

- Confidence
- Organisation
- Persistence
- Getting Along
- Resilience

### The St. Francis Student Profile

If you are within the age range of 13-21, eager to learn and keen to participate, we invite you to come and be a part of this colourful tapestry.

### The School at a Glance:

- We were established in 1960
- We provide Secondary, Pre-University and University-bridging courses

- English is our main medium of instruction
- We enroll both local and international students from the ages of 13 – 21
- We are home to annual cohorts of 500 students
- Our students come from 27 different countries
- Our curricula are accredited by leading awarding bodies: Singapore-Cambridge, London Edexcel and the Curriculum Council of Western Australia
- We have collaborations with universities in the United States, United Kingdom and Australia
- Our lessons are designed with dynamism and flexibility, suited to the pace of international students
- We are registered with the Ministry of Education, Singapore

### International Recognition



#### Singapore Quality Class

We maintain systematic functioning in critical areas such as IT, People, Leadership and Customer Service. As an SQC Award recipient, we enjoy "green-lane" processing for student pass application.



#### Transition from CaseTrust for Education Scheme to EduTrust Certification Scheme

The school is currently applying for EduTrust Certification. Under this new scheme,

1. there is greater emphasis on academic processes;
2. protection of fees is extended to local students; and
3. medical insurance coverage is a requirement for all students.

### St. Francis Reminisces...

50 years in the education field, we have taught a lot and learnt even more. Since our establishment in 1960, our founder Mrs. Doraisamy's small study group on St. Francis Road, Singapore, has evolved into one of Singapore's leading private schools today.

Through the years, many have passed through the gates of St. Francis Methodist School, each bringing new ideas along and leaving valuable insights behind. Students and teachers alike, we teach, learn and grow together in St. Francis Methodist School - our home away from home.

# VISIONARY LEADERSHIP

## Note from the Principal

It is with pleasure that I welcome your interest in St. Francis Methodist School, Singapore.

St. Francis Methodist School has had a long and proud track record in providing holistic education since 1960. We take pride in the broad range of educational programmes. Besides the ones leading to the Singapore-Cambridge 'O' and 'A' Levels, we also offer the BTEC Higher National Diploma in Business, the St. Francis Baccalaureate Programme and the Australian Matriculation (AUSMAT) Programme.

With our eyes fixed on our vision, which is *"to be a school of choice with a vibrant international learning community, rooted in God's Word and inspiring lives to be the best that they can be"*, we remain focussed on nurturing individual talent. We strive for academic excellence and exercise a commitment to students' social and emotional development.

The great diversity of our school community creates a unique learning environment in St. Francis. Students from different countries and cultures learn to interact with and appreciate one another. Diversity is valued, multiculturalism celebrated, and the integrity of the individual respected. With 27 different nations represented here, your learning experience in St. Francis will undoubtedly be a most enriching and colourful one.

We welcome you to journey with us.

**Mrs Lenie Cho**  
CEO/Principal



## A Melting Pot Experience

With students from more than 20 countries, the dynamics make for a creative splurge with a stimulating exchange of ideas, cultural norms, food recipes and friendship amongst students and staff. Students are also trained in leadership camps through our Student Councillor initiatives. All students learn about Confidence, Organisation, Persistence, Getting Along and Resilience through our much talked-about in-house "You-Can-Do-It" Pastoral Programme.

## Improve English

Ample opportunities exist for overseas students to improve their spoken and written English. Our English Language Foundation (ELF) Programme is integrative and mapped onto the Cambridge ESOL metric with students prepared for the First Certificate in English Examinations, IGCSE ESL and the IELTS, too.

## Unique Subject Combinations

We are strong in flexibility and try always to be adaptable in everything we do. We encourage students to do subject combinations they can excel in and counsel them accordingly. Chemistry has become the spine of Science subjects while a credit pass in English Language is essential for entry into reputable institutes anywhere in the world.

## A One-of-a-Kind Adventure

2010 marks our 50th Anniversary as a St. Francis Community. This Prospectus is "upsized" for the event and contains comprehensive information on the school, curriculum, neighbourhood and the people who make it all happen. Join us for an experience that can only be found at St. Francis!

## Note from COO in Finance, Marketing and School Operation

**Mr James Teo**



While St. Francis Methodist School is rich in heritage, valuing what the past has given us, we are also an exciting and innovative place of learning. It is here at St. Francis Methodist School, in this caring Christian environment, where girls and boys can form lasting friendships to nurture them throughout life. The School is a vibrant and happy place to be. Experience this warmth and friendliness of spirit for yourself by visiting us at the School campus. We look forward to meeting you.

# PASSIONATE TEACHERS



I teach because I love teaching, and learning as I do so.

Mdm Yan Chai Fong, Pre-University Division Head

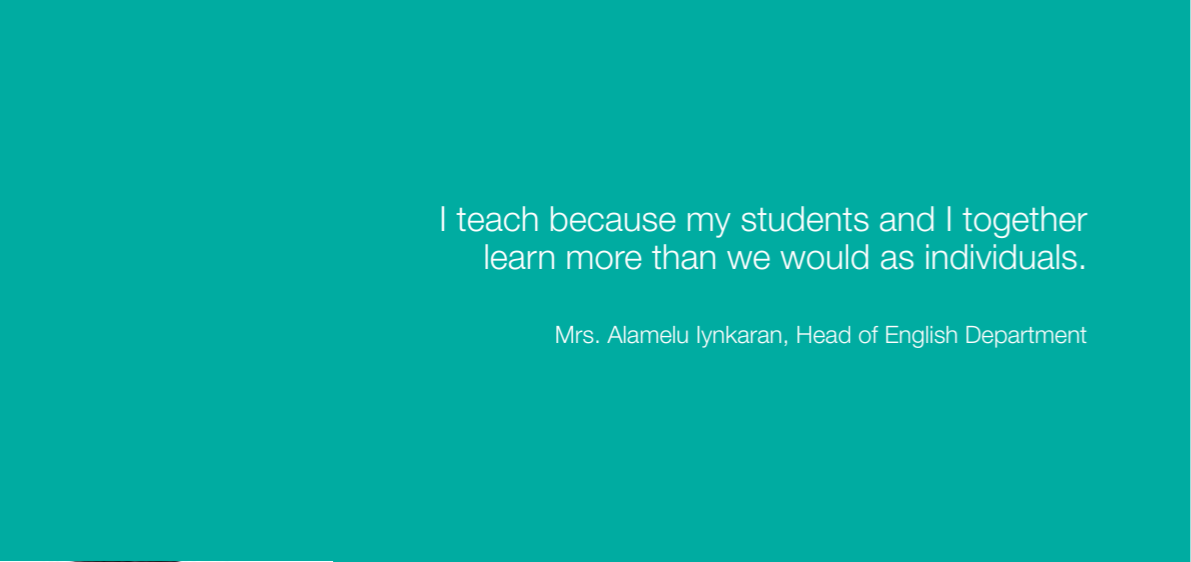
I teach because I believe I can shape the present and future of my students with excitement and complete fulfillment in the “edutainment” world of Visual and Performing Arts.

Mr. Philip Tan, Head of Aesthetics / PE



I teach because it is a calling from God!

Mr. Heng Tee Wee, Lower Secondary Division Head



I teach because my students and I together learn more than we would as individuals.

Mrs. Alamelu Iynkaran, Head of English Department



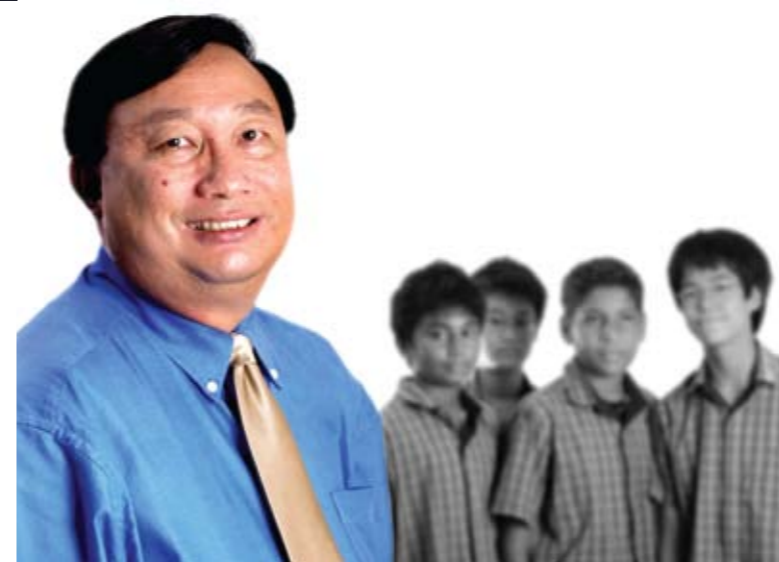
I teach because it is very fulfilling to see the growth of a student.

Mr. Lim Kim Song, Head of Science Department



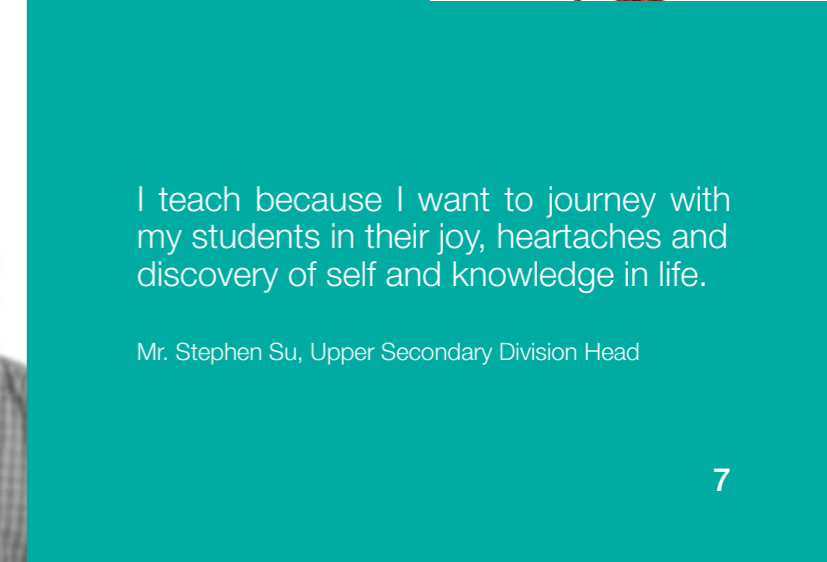
I teach because there is happiness in being a teacher.

Ms. Katherine Sumathi Kuppusamy,  
English Language Foundation Programme



I teach because I want to journey with my students in their joy, heartaches and discovery of self and knowledge in life.

Mr. Stephen Su, Upper Secondary Division Head



## DEDICATED SUPPORT STAFF



I serve in St. Francis because I enjoy it!

Ian Poulter, School Counsellor / PC Co-ordinator /  
Admissions Registrar

I serve in St. Francis because I believe  
we can turn possibilities to realities.

Elizabeth Daniella, Marketing Executive



## HAPPY STUDENTS

I love this school where the teachers have become my friends. - Shuya Araya, Sec 3C2

To me, St.Francis is not just a place of learning but also a place of love and fun – Namthip Woods, Sec 2A

At St. Francis, we value and cherish diversity. In acknowledging and embracing our individual differences, we have set a strong foundation for our school to scale great heights. – Zain Kazmi, PU1F1

The will to win, the desire to succeed and the urge to reach my fullest potential - these are some of the values which I've come to learn in St. Francis that I now look upon for personal excellence in life. – Louise Olivia Meech, PU1A

At St. Francis, I have the chance of making friends from all around the world! – Thelsa Lee Novisa, Sec 3C3

## SATISFIED PARENTS

As parents, we are secure in the knowledge that St. Francis Methodist School has the best interests of our daughter at heart.

David Woods, Father of Namthip Woods (Sec 2A)

St. Francis expands one's capacity for growth, maturity and better acquired knowledge on what it takes to be a better person, and how to look at things with the right attitude and mindset.

Sally Chua, Mother of Louise Olivia Meech (PU1)

# ACADEMIC COURSES



## ENGLISH

### ENGLISH LANGUAGE FOUNDATION (ELF)

#### (ENGLISH IMMERSION PROGRAMME)

This programme is a minimally 20-week preparatory course designed for students who wish to refresh their knowledge of English or for those who need to strengthen their command of the language. Lessons equip students with a full understanding of the English Language and allow them to become accustomed to this medium of instruction used in all schools in Singapore. With a wide scope that covers not just the study of the English Language itself but also the study of other basic subjects (Mathematics, IT Programme and Performing Arts) taught and conveyed through English, this programme fully prepares our students for further studies in our main Secondary and Pre-University academic programmes. Students who have passed the ELF Programme will be encouraged to sit for the IELTS/TOEFL examinations, the Cambridge Certificate in English which is assessed and accredited by the University of Cambridge in the UK. St. Francis Methodist School is an approved Centre to conduct IELTS and TOEFL examinations, thus providing convenience for all our students.

## LOWER SECONDARY

### Secondary 1 & 2

The two-year Lower Secondary Programme prepares students for the Upper Secondary years in the Singapore-Cambridge GCE 'O' Level or the London IGCSE pathway. It offers students a wide range of subjects before they move on to subject specialisation in the Upper Secondary level. After the Secondary Two final examinations, students have the choice to continue their Upper Secondary education in either the Singapore-Cambridge GCE 'O' Level Programme, the London IGCSE Programme or AUSMAT Years 9 and 10.

The content of all examinable subjects in the Lower Secondary School (LSS) are taught based on the 4-year 'O' Level Express syllabus as outlined by the Singapore Ministry Of Education (MOE). In line with our LSS' motto, Building Strong Foundations, the Sec 1 and 2 courses seek to establish in students a solid foundation of the General Sciences, Mathematics and various areas of Humanities. Having fun and going for field trips are also included in the curriculum as part of our out-of-the-

classroom learning experience, so as to enable our students to see the relevance of their studies in relation to the real world.

## AUSTRALIAN MATRICULATION (AUSMAT) YEAR 7 AND YEAR 8

Another exciting pathway that students can choose is a very interactive, creative mode of learning found in the Australian Matriculation (AUSMAT) Year 7 and Year 8 Programme endorsed by the Curriculum Council of Western Australia.

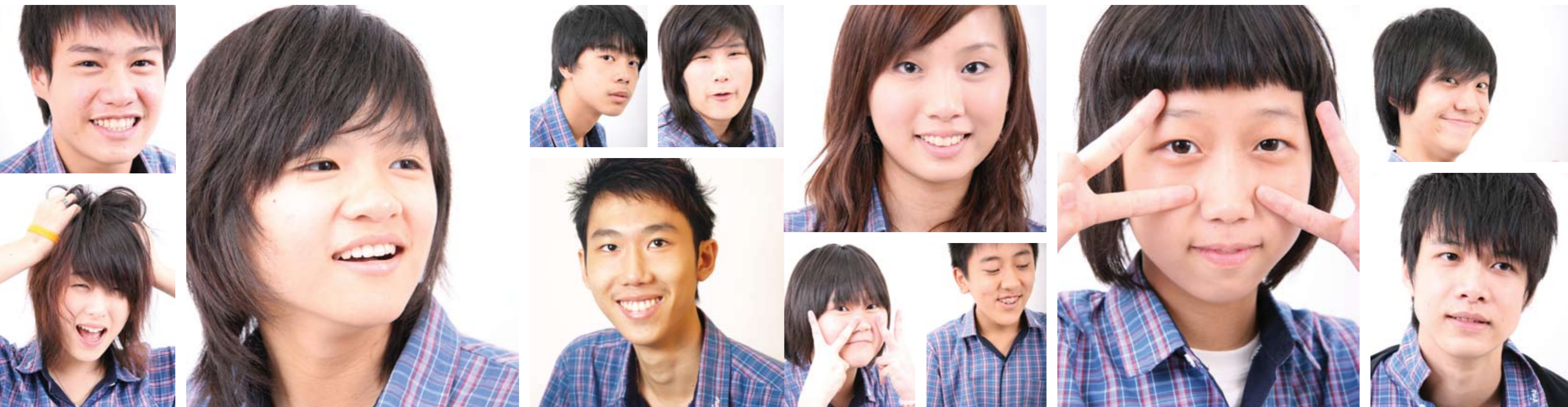


## UPPER SECONDARY

### Singapore-Cambridge GCE 'O' Level

The Singapore-Cambridge General Certificate of Education (GCE) 'O' Level Programme is a two-year programme that is internationally recognised and serves as an entry requirement for college, overseas university foundation and professional courses worldwide. Students enrolled in this programme have a distinct advantage as they will acquire a strong academic foundation that prepares them for higher-level education. This Programme focusses on the acquisition of knowledge on the chosen subjects, with

constant emphasis on information that is relevant to the student's career development, providing a strong foundation on which to pursue their college and tertiary education. It also undertakes the Drill-and-Practice approach to learning; teachers teach in a structured manner with the use of notes, group work and technology. A comprehensive range of subject options is available for students to choose from. In each area, we have developed professional expertise, fully exemplified by our dedicated teachers.



#### London Examinations IGCSE

The London Examinations IGCSE is a unique qualification that embraces the best practices of GCE 'O' Level and GCSE. Administered by Edexcel, the first of three unitary awarding bodies to be established to offer academic and vocational qualifications, the IGCSE boasts a balanced international curriculum that is designed to encourage high academic standards through a practical approach to teaching and learning, and provides students with an international perspective to their studies. Successful students receive an internationally recognised qualification, the International General Certificate of Secondary Education, which is equivalent in standard to the international GCE 'O' Level and British GCSE examinations.

The IGCSE, though distinctly international in flavour, allows subject contents to be customised, where possible, according to the Singaporean locality, so as to make it more relevant to the students of SFMS. Here at SFMS, we provide the IGCSE with a focus in the area of Business, offering subjects such as Business Studies, Accounting and Economics on top of the General Sciences and Mathematics. The curriculum is suitable for students of all nationalities and all levels of ability. It provides an ideal preparation for higher level courses at St. Francis such as GCE 'A' Level, AUSMAT (Australian Tertiary Entrance Examination Years 11 & 12), the St. Francis Baccalaureate, BTEC Higher National Diplomas, and for vocational training and employment.

#### Australian Matriculation (AUSMAT) Year 9 and Year 10

The Australian Matriculation Programme Year 9 and Year 10 is a follow-up from the Year 7 and Year 8 one, where the student's mind is engaged creatively, using project and group work, computer-assisted learning and other engaging activities.

#### ST. FRANCIS ACADEMY

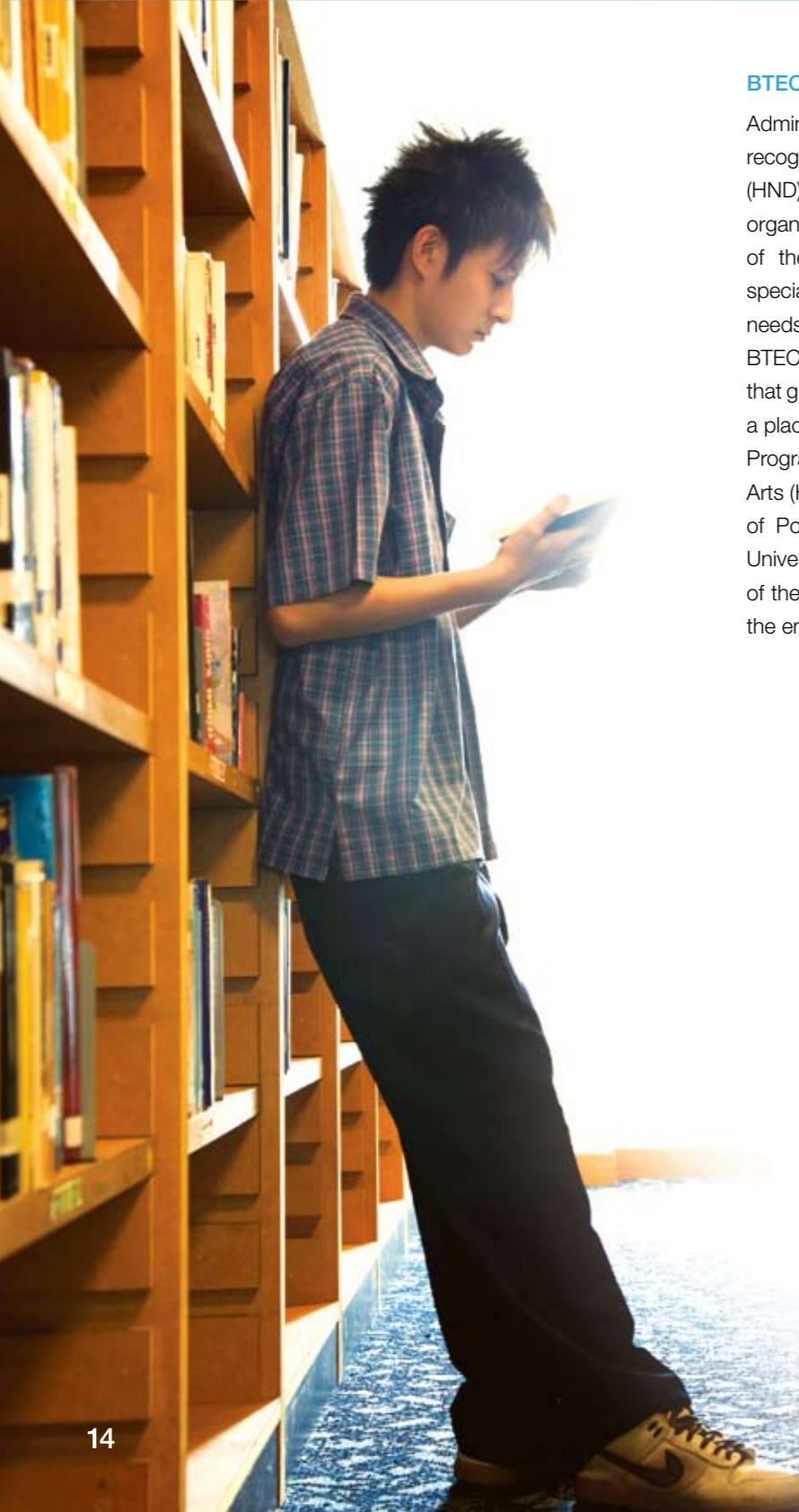
##### Singapore-Cambridge GCE 'A' Level

The Singapore-Cambridge General Certificate of Education (GCE 'A' Level) has been from time immemorial, the culmination of Secondary education and a gateway to tertiary education. It is internationally recognised and serves as an entry requirement for Degree and Professional courses worldwide. Students enrolled in this Programme have a distinct advantage as they will acquire a strong academic foundation that enables them to fit into the first year of a Degree Programme.

This two-year Programme is designed to equip 'A' Level students with a comprehensive set of skills that will enhance their future studies and target students for middle management career positions. It focusses on ensuring the acquisition of knowledge on the chosen subjects with constant emphasis on information that is relevant to the student's career development. Students will be trained in developing critical thinking skills and the ability to be original in the analysis of world events. This Programme also places strong emphasis on the English Language, both written and spoken, as an international language for communication. All in all, the Singapore-Cambridge GCE 'A' Level Programme provides a strong foundation for the pursuit of a University education.

##### Australian Matriculation (AUSMAT) Year 11 and Year 12

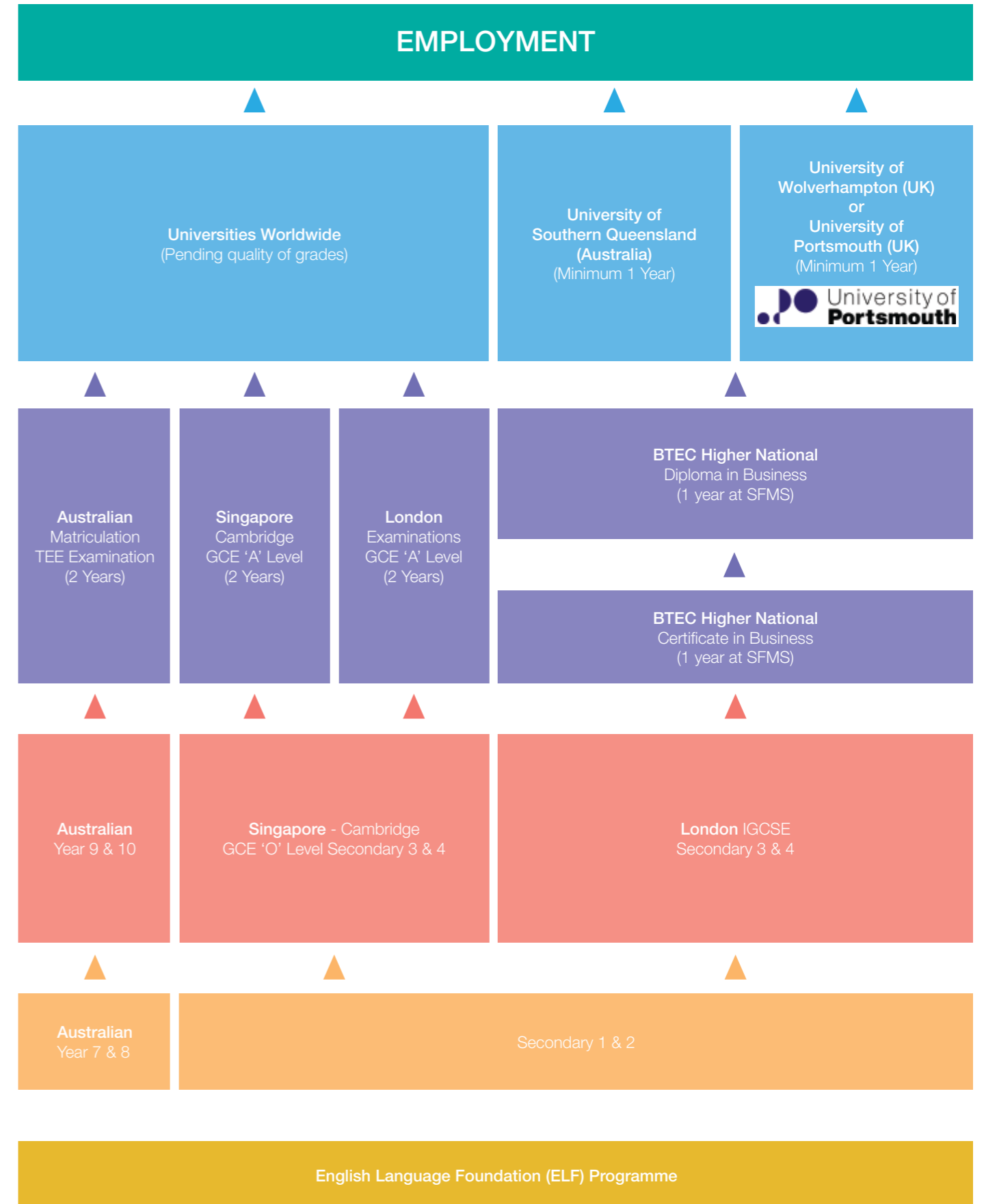
The AUSMAT Years 11 and 12 is an internationally recognised Pre-University programme that is equivalent to the GCE 'A' Level. Administered by the Curriculum Council on behalf of the Government of Western Australia, it is typically a two-year full-time programme. The Australian Years 7-10 is the programme that leads to the continuation of study at the AUSMAT Years 11 and 12. This programme focusses on applied knowledge rather than abstract theories, therefore measuring student ability not just from the final external examination conducted by the Curriculum Council of Western Australia at the end of year 12, but also through student achievements in school projects, assignments and presentations. A wide range of subjects are offered to suit each student's academic preference. Contemporary disciplines like Media Production and Analysis, Drama Studies and Aviation Studies are offered on top of the typical Sciences and Humanities.



**BTEC Higher National Diploma in Business**

Administered by Edexcel, UK's leading provider of internationally recognised qualifications, the BTEC Higher National Diploma (HND) in Business is designed to meet the needs of business organisations. It provides students with a practical overview of the business world while also offering opportunities for specialisation in various fields of Business, thus catering to the needs of our diverse international student body. SFMS offers BTEC HND in Business as a two-year University bridging course that guarantees students who pass all modules in the programme a place in the Bachelor of Arts (Honours) Business Management Programme in University of Wolverhampton (UK), Bachelor of Arts (Honours) Business Administration Programme in University of Portsmouth (UK), or Bachelor of Business Programme in University of Southern Queensland. Direct entry into the final year of the programmes of the respective universities is subjected to the entry requirements of the university in question.

# ACADEMIC PATHWAY



Legend:

- University (Blue)
- Pre-University (Purple)
- Upper Secondary (Red)
- Lower Secondary (Orange)
- Foundational Level (Yellow)

# ACADEMIC ACHIEVEMENTS



Top Student  
2008



Emily Lam Zhao Ping  
Australia  
Ausmat Examinations  
TEE Score : 99.15  
6A Grades

Top Student  
2008



Choi Hyoe Hyun  
Korean  
GCE 'O' Level Examinations  
5A Grades and 1B Grade

Top Student  
2008



Botha Johann  
South Africa  
London IGCSE Examinations  
3A Grades and 2B Grades

Top Student  
2007



Tan Mei Lyn  
Australia  
Ausmat Examinations  
TEE Score: 99.90  
6A Grades

Top Student  
2007



Karen Lynn Jewell  
Great Britain  
London IGCSE Examinations  
3A Grades and 2B Grades

Top Student  
2007



Alison Lam Sheng Ping  
Australia  
Ausmat Examinations  
TEE Score: 99.90  
6A Grades

Top Student  
2008



Pham Hoang Kim Long  
Vietnam  
London A Examinations  
2A Grades, 2B Grades and  
1C Grade

Top Student  
2007



Hsieh Tzu Chin  
Taiwan  
GCE 'O' Level Examinations  
5A Grades and 1B Grade

Top Student  
2007



Gu Xinyuan  
China  
GCE 'A' Level Examinations  
4A Grades

Top Student  
2006



Sherwin Lee Chang Yi  
Singapore  
Ausmat Examinations  
TEE Score: 91.5  
6A Grades

Top Student  
2006



Jessica P. Chayavichislip  
Thailand  
GCE 'O' Level Examinations  
5A Grades and 2B Grades

Top Student  
2006



You Weiqi  
Singapore  
GCE 'A' Level Examinations  
4A Grades and 1B Grade

# ACADEMIC NICHE



## Visual and Performing Arts

The Visual and Performing Arts Programme is central to the education offered by St. Francis Methodist School and St. Francis Academy. The environment encourages the students to find and develop their own identities, cultivating a positive spirit of experimentation and innovation in them, working together toward professional and creative excellence in the visual arts, music, dance and theatre. Through workshops, productions, exhibitions, internships and other activities, students are encouraged to work in the community, exploring and developing their own roles as artists and educators.

Each of the teachers in the department is a practising and creative artist who truly understands the demands of performance. We are committed to assist the students to enter contemporary fields of performance and production.

## Highlights

- Orchestra Music Collaboration with Harrow International School (Thailand), Darul Takrim Home for the Aged, 2002
- Full Music and Dance Programme at Career and Recruitment Fair, Suntec Convention Centre, 2003
- Music and Dance at Singapore Arts Festival and World Environmental Day – Feed Me, 2003, 2004
- Singapore National Day, 2003
- Opening of Arts House, 2004 (Opening Item)
- NKF Fund-raising, Singapore Media Corp, 2005
- Rhythm of Youth, 2005
- Arts Central, Singapore Media Corp, 2005
- Singapore Edge, Truman Brewery-London, 2006
- French Arts Festival, Kuala Lumpur, 2005
- F1- Singapore River Festival – Legenda Singapura, 2008
- Asean Ministerial Conference, 2008
- Odyssey of the Mind, 2009

## CCA LIST FOR 2009

### Sports & Other Clubs and Societies

	CCA Description	Training Days / Payment
1	Badminton (Competitive)	Thursday
2	Badminton (Recreational)	*
3	Basketball Boys & Girls	Friday - \$50 per semester
4	Chess (Chinese & International)	*
5	Chinese Cultural Society	*
6	Christian Fellowship	*
7	Floorball	Wednesday
8	Library Club	*
9	Snooker	Friday - \$50 per semester
10	Soccer Boys	Friday - \$50 per semester
11	Table Tennis	Wednesday
12	Astronomy Club	*
13	Maths Club	*
14	Science Club	*
15	Girls' Brigade	*
16	Hydroponics	*

### VISUAL & PERFORMING ARTS CCA

	CCA Description	Training Days / Payment
17	Fine & Visual Arts - Creative Art Club	*
18	Fine & Visual Arts - Photography Club	*
19	Music - AVA Club	*
20	Music - Music Ensemble	*
21	Music - Percussion Ensemble	*
22	Dance - Hip Hop Dance	\$100 per year
23	Drama - Drama Club	*
24	Individual Classes - Piano	\$120 per month, 1 hour per week
25	Individual Classes - Guitar	\$120 per month, 1 hour per week
26	Individual Classes - Violin	\$120 per month, 1 hour per week
27	Individual Classes - Drum	\$120 per month, 1 hour per week

\* Training Days may vary

Payment fees correct at time of printing

# OUR SERVICES



## Accommodation Arrangements

It is compulsory for new overseas students to enrol in a school-approved hostel / homestay. SFMS offers two accommodation choices for our students:

### 1. Hostels

SFMS has collaborations with 2 different hostels that are only a ten-minute bus ride away from our Campus:

(a) ACS (Oldham) Hostel  
80 Barker Road Singapore 309937 | [www.oldhamhall.org](http://www.oldhamhall.org)

(b) Nanyang Girls' Boarding School  
2 Linden Drive Singapore 288683  
[http://www.nygh.moe.edu.sg/boarding\\_sch/index.shtml](http://www.nygh.moe.edu.sg/boarding_sch/index.shtml)

Students may choose to live in a hostel environment with supervised care by a housemaster / housemistress. Monthly rental fee ranges from \$900 to \$1100. This applies to a twin-sharing room with daily meals and laundry services. The hostel rooms are not air-conditioned. Kindly refer to the respective websites for more details on each of these hostels.

## 2. Homestay Arrangements

SFMS also offers our students the unique opportunity to stay with a typical Singaporean family.

We have pre-selected families that provide good homes and a conducive learning environment. Offered at competitive rates, this is your chance to experience first-hand the lifestyle of a Singapore family. Through the homestay programme, you get to interact in English with Singaporeans, go out with your "family" and sample Singapore's famous hawker food and visit places of interest with people who know Singapore intimately.

The school maintains a close relationship with our home-stay families. Parents can enjoy peace of mind without having to pay extravagantly. Approximate monthly rental fee is about S\$900 - S\$1200. This is estimated based on a twin-sharing room with daily meals and laundry services provided. The room is air-conditioned unless otherwise stated.

For more details, please visit our SFMS Accommodations webpage: [www.sfms.edu.sg/student\\_2.html](http://www.sfms.edu.sg/student_2.html)

## Student Pass Processing

All foreign students seeking education in Singapore must apply for student visa, or Student Pass as named by the Immigration & Checkpoints Authority (ICA), before they can be enrolled officially into their school of choice. SFMS provides the Student Pass Processing service for international students for an administrative fee of S\$400. This service includes the following:

- Online submission of student documents and information to ICA
- Liaising with ICA with regard to any requests for supplementary documents
- Arranging for student's medical checkup (if required by ICA)
- Accompanying student to ICA for required verification and final formalities
- Collection of student pass from ICA
- Submission of appeal letters in the case of student pass rejection

For further details regarding Student Pass Processing, kindly visit ICA's official website at [www.ica.gov.sg](http://www.ica.gov.sg).

### Airport Pickup

Airport pickup can be provided for foreign students\* upon request, at a charge of S\$105.

Pickup appointments must be made at least 3 working days prior to the date of student arrival. Appointments made any later will be subjected to the School's manpower availability.

\* Only applicable for students who have received student pass approval and confirmed enrolment with SFMS.

### Medical Insurance Coverage

All students are covered for General Personal Accident Insurance and Group Hospitalisation and Surgical Insurance of sum insured of S\$20,000 with effect from 1 January 2010.

### Food

The School Cafeteria provides affordable halal\* meals and snacks for our students at an average cost of S\$3.50 a meal. The Cafeteria operates from 8am to 3:00pm every Monday to Friday, except during term breaks and public holidays.

\*No pork, no lard

### Bookshop

The School Bookshop carries all local and imported textbooks and class materials as required by our academic programmes, as well as stocks for our school uniforms. Stationery needed for classroom use can also be purchased there.

### Lockers

Lockers are available for rent at every classroom floor for an annual fee of S\$40. Rental is granted on a first-come-first-served basis, subjected to locker availability.

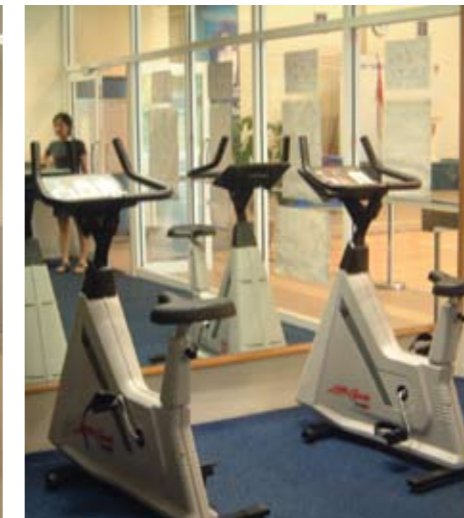
# OUR FACILITIES

## The School Campus

- Classrooms
- IT Laboratories
- Science Laboratories
- Multi-Purpose Hall
- Sporting Facilities:
  - Gymnasium
  - Basketball Court
  - Table Tennis equipment
  - Snooker equipment
  - Badminton Court

## Accommodation Choices

- ACS Oldham Hall
- Nanyang Girls' Boarding School
- Homestay apartments



## Science Laboratories

For adequate Science practical sessions, the school boasts modern Chemistry, Physics and Biology laboratories which can each accommodate 30 students comfortably. To integrate Information Technology into the process of teaching and learning Science, an additional Science-IT Lab is available. The design and layout of these laboratories are done in detailed consultation with our Science Department teachers.

## Library

Located on Level 6, the library / learning centre is opened from 8.30am to 5.30pm, Monday to Friday. Its collection includes a broad spectrum of books and CD - ROMs comprising encyclopedias, dictionaries, atlases and maps, as well as reference materials on the various disciplines. A priceless collection of National Geographic, Scientific American and Reader's Digest from the year 1947 onwards is among some of the treasures you will find in our library.

## Multi-Purpose Hall

The Multi-Purpose Hall, which can house up to 800 students, serves a variety of functions in the school. Its main usage is for the daily morning assembly and for PE lessons for all our students. Besides that, it is also used for the annual Orientation for new students and formal functions such as Graduation Service and staging of school plays. It also serves as an assembly area for our international summer and winter camp students. Several Co-Curricular Activities (CCAs) such as badminton and table tennis are also conducted in the hall. The hall is open to outsiders for hire to hold retreats and company functions.

## Classrooms

The school has 29 fully air-conditioned classrooms equipped with projectors to facilitate an effective teaching environment as well as allowing a more innovative learning experience for our students. In 2006, SFMS made the transition to the home room system which raised the sense of ownership over the classrooms for the teachers and encourages greater interaction among our students

## Gymnasium

The gymnasium houses the latest exercise and training equipment. Students can enjoy the privilege and convenience of working out on-campus with the permission of the PE teacher.

## IT Laboratory

The IT Laboratory is opened to students and staff for use from 8.30am to 5pm, Monday to Friday. An IT support staff / officer is on hand to offer technical assistance. The booking of the IT Laboratory facilities may be done with the IT Personnel.

# THE VICINITY



Trinity Theological College



MOE Dairy Farm Adventure Camp



Ministry of Education  
Dairy Farm Adventure Centre  
30 Dairy Farm Road 667008



### Conveniences just around the corner

- Rail Mall: 3 minutes' walk; Food, Cafés, Convenience store.
- MOE Dairy Farm Adventure Centre: 10 minutes' walk; Educational camping grounds
- Bukit Panjang Plaza: 15 minutes' ride; Shopping mall
- Bukit Timah Nature Reserve: 10 minutes' ride; Nature Park
- Hill View and Dairy Farm: Secured residences



Salvation Army

THE SALVATION ARMY  
PRAISEHAVEN



Rail Mall



# FEES POLICY



## All-inclusive Policy

St. Francis Methodist School has an all-inclusive policy that covers the cost of tuition as well as a range of curricular and co-curricular activities. There may be some charges for additional outdoor education or specialized co-curricular activities imposed on the parents on a co-sharing basis.

A copy of the Fee Schedule for 2010 may be downloaded from the school website at [www.sfms.edu.sg](http://www.sfms.edu.sg).

## School Plan

School Plan is available to pay your child's tuition fees directly to the school on a semestral basis or by way of a specified credit card. A service fee may apply for this plan.

## Concessions

### (a) Multiple Enrolments

In the event there are two or more siblings attending St Francis Methodist School at the same time, a concessional discount of ten percent (10%) of the tuition fees is allowed for the younger or older sibling(s).

### (b) Children of Christian Ministry Staff

A concessional discount of fifty percent (50%) of the tuition fees applies to students whose parents are Christian Ministry Staff or students of Trinity Theological College.

All tuition fees and charges are subjected to annual review.

## Withdrawal

One month's notice in writing from the parents/guardian is required if a student would like to withdraw from the School.

## Refund Policy

The School's refund policy is clearly stated in Clause 2.4 of the Standard PEI-Student Contract.

A copy of the Standard PEI-Student contract can be downloaded from the school website at [www.sfms.edu.sg](http://www.sfms.edu.sg)



## ST. FRANCIS METHODIST SCHOOL ADMISSION APPLICATION FORM

Singapore-Cambridge GCE 'O' Level  IGCSE  Ausmat (Secondary)  Date Joined   
 Singapore-Cambridge GCE 'A' Level  London 'A' Level  SF Baccalaureate  Class   
 BTEC Higher National Diploma (Business)  Australian Matriculation (TEE)  ELF

### 1. PARTICULARS OF APPLICANT

Local  Foreign  PR  Male  Female

Family Name

First Name

Middle Name

Address   
[In Home Country]

Address   
[ In Singapore ]

Passport / NRIC No.  Date of birth  [ dd/mm/yy ]

Nationality  Religion

Tel [ H ]  Tel [ HP ]

Email

Highest Level Completed

Name of Sibling Studying in St. Francis [ if any ]

Last School Studied

Any Medical History



### 2. PARTICULARS OF PARENT

Local  Foreign  PR  EP

Family Name

First Name

Middle Name

Address   
[ In Home Country ]

Passport / NRIC No.  Occupation

Tel [ H ]  Tel [ HP ]

Tel [ O ]  Relationship to Applicant

Email

#### Confidentiality Clause:

St. Francis Methodist School (SFMS) is committed to maintaining the confidentiality of the student's personal information and undertakes not to divulge any of the student's personal information to any third party without the prior written consent of the student SUBJECT TO the obligation of SFMS to disclose to any Singapore government authority any information relating to the student in compliance with the law and/or to the organisation conferring/awarding the qualification.

### 3. PARTICULARS OF GUARDIAN

Local  Foreign  PR

Family Name

First Name

Middle Name

Address [In Home Country]

Passport / NRIC No.  Occupation

Tel [ H ]  Tel [ HP ]

Tel [ O ]  Relationship to Applicant

Email

### 4. REFERRED BY

Agent  Staff  SFMS Student  Others

Family Name

First Name

Middle Name

Address

Tel [ H ]  Tel [ HP ]

Tel [ O ]  Agency Code

Agency Name / Student Class

Email

**Confidentiality Clause:**

St. Francis Methodist School (SFMS) is committed to maintaining the confidentiality of the student's personal information and undertakes not to divulge any of the student's personal information to any third party without the prior written consent of the student SUBJECT TO the obligation of SFMS to disclose to any Singapore government authority any information relating to the student in compliance with the law and/or to the organisation conferring/awarding the qualification.

### 5. DECLARATION BY APPLICANT

1. I have read and understood the rules and regulations specified in the Admission Guide and I hereby promise to follow them as well as instructions given by teachers and those in authority in the school.
2. I promise to be punctual for Assembly and to attend classes every school day without fail, unless I can provide a medical certificate as support for my absence.
3. I understand that if my overall attendance falls below 90%, I may be barred from taking all school examinations.
4. (For overseas students) I understand that if my attendance falls below 90% in any month without any valid reason, or if I am absent for a period of 7 consecutive days or more without any valid reason, this will be reported to Immigration & Checkpoints Authority (ICA) and I am liable to have my Student Pass cancelled.
5. I understand that I need to give a notice in writing to the school if I wish to leave the school.
6. I understand that the Principal may require at any time the withdrawal of a student from the school for any cause judged by the Principal in her absolute discretion to be adequate.
7. (For overseas students) I promise to surrender my Student Pass to the school immediately without fail upon withdrawal from the school.
8. (For local students) I promise to surrender my bus pass to the school when I leave school.

SIGNATURE OF STUDENT

DATE

### 6. DECLARATION BY PARENT / GUARDIAN

1. I will supervise my ward's behaviour and conduct.
2. I will supervise my ward's attendance and academic performance in school, and be responsible for prompt payment of my ward's school fees.
3. I understand that it is my responsibility to write a letter to inform the school one month in advance if my ward is withdrawing from the school.
4. I will be responsible in ensuring that my ward surrenders his / her Student Pass to the school immediately upon his / her withdrawal from the school, or at any point in time when the school terminates his / her studies for any reasons deemed adequate by the school.
5. I will notify the school immediately if there is any problem concerning the ward, a change of guardianship, a change of address or contact numbers, etc.
6. I understand that my ward may be barred from taking all school examinations if his / her attendance falls below 90%.

SIGNATURE OF PARENT

DATE

SIGNATURE OF GUARDIAN

DATE

**Confidentiality Clause:**

St. Francis Methodist School (SFMS) is committed to maintaining the confidentiality of the student's personal information and undertakes not to divulge any of the student's personal information to any third party without the prior written consent of the student SUBJECT TO the obligation of SFMS to disclose to any Singapore government authority any information relating to the student in compliance with the law and/or to the organisation conferring/awarding the qualification.

